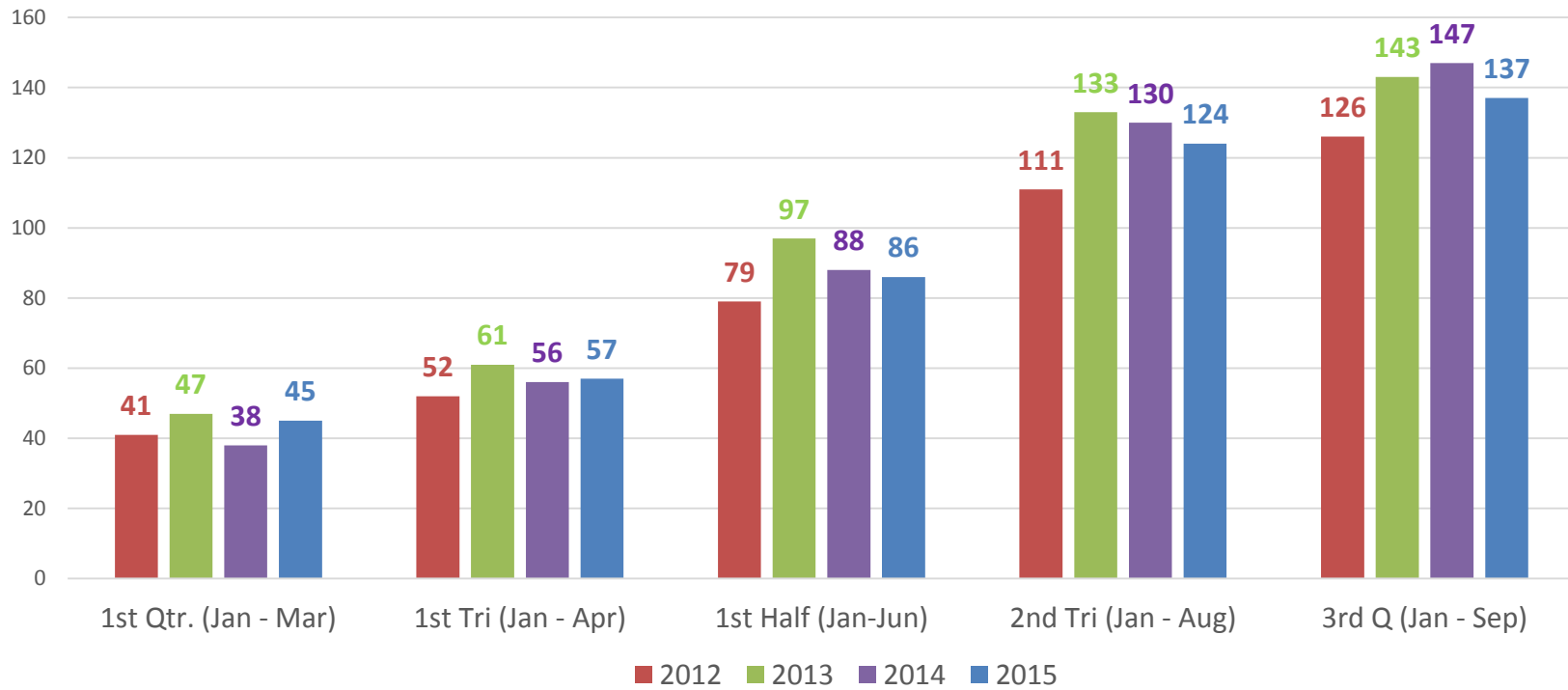


CCMEO Comparison Heroin Related Overdose Deaths, 2012 - 2015*

(*2015 cases for August and September are not ruled and estimated based upon prelim tox)

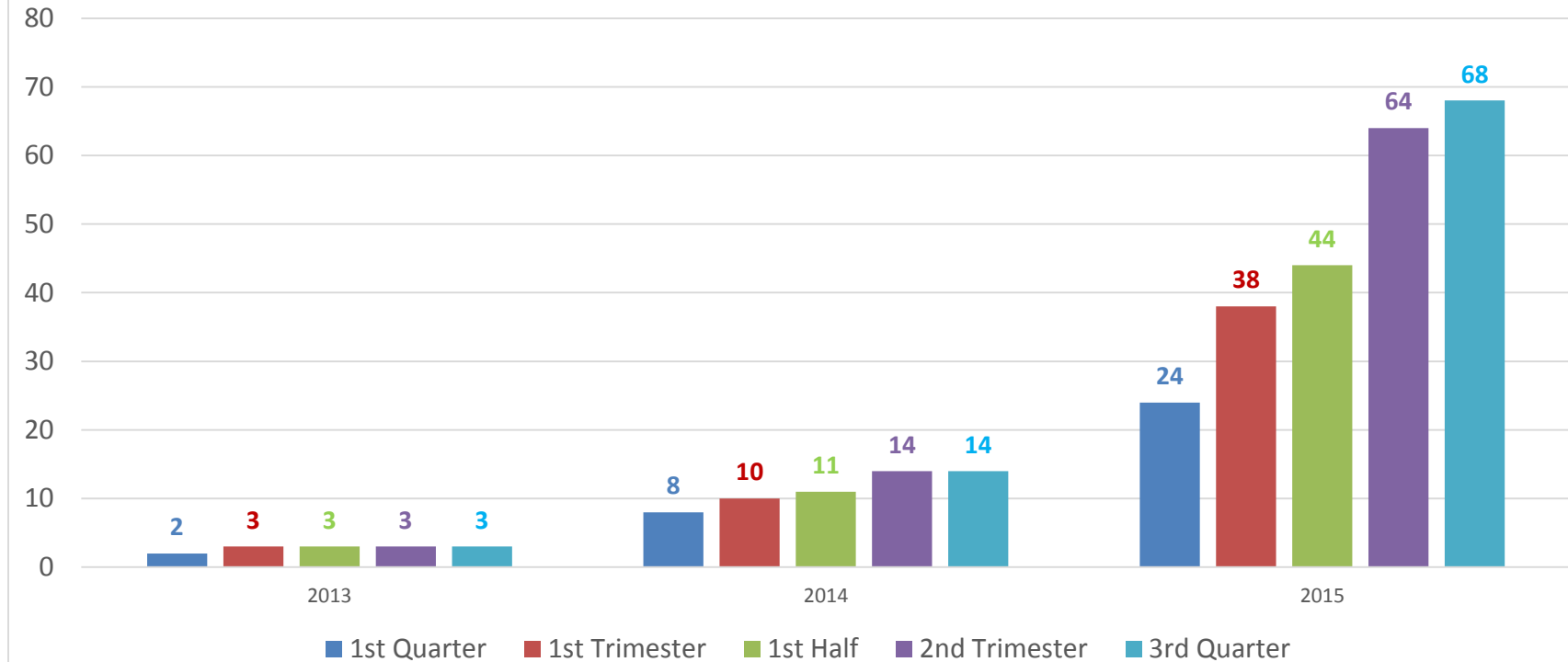


Source: Cuyahoga County Medical Examiner's Office
10/23/2015



CCMEO Fentanyl Related Deaths, Comparisons 2013 -2015*

(*2015 cases for August and September are not ruled and estimated based upon prelim tox)

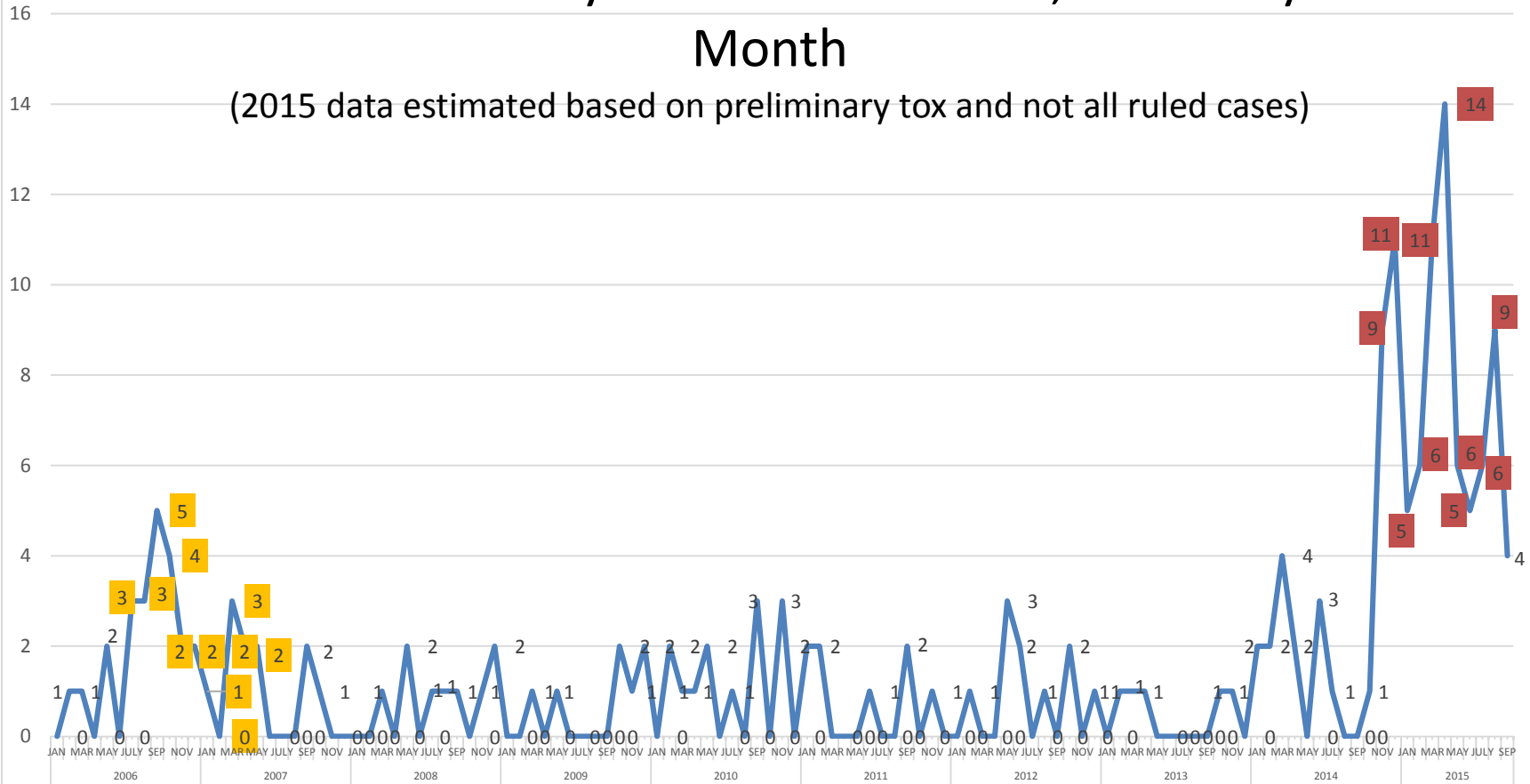


Source: Cuyahoga County Medical Examiner's Office
10/23/2015



CCMEO Fentanyl Deaths since 2006, Month by Month

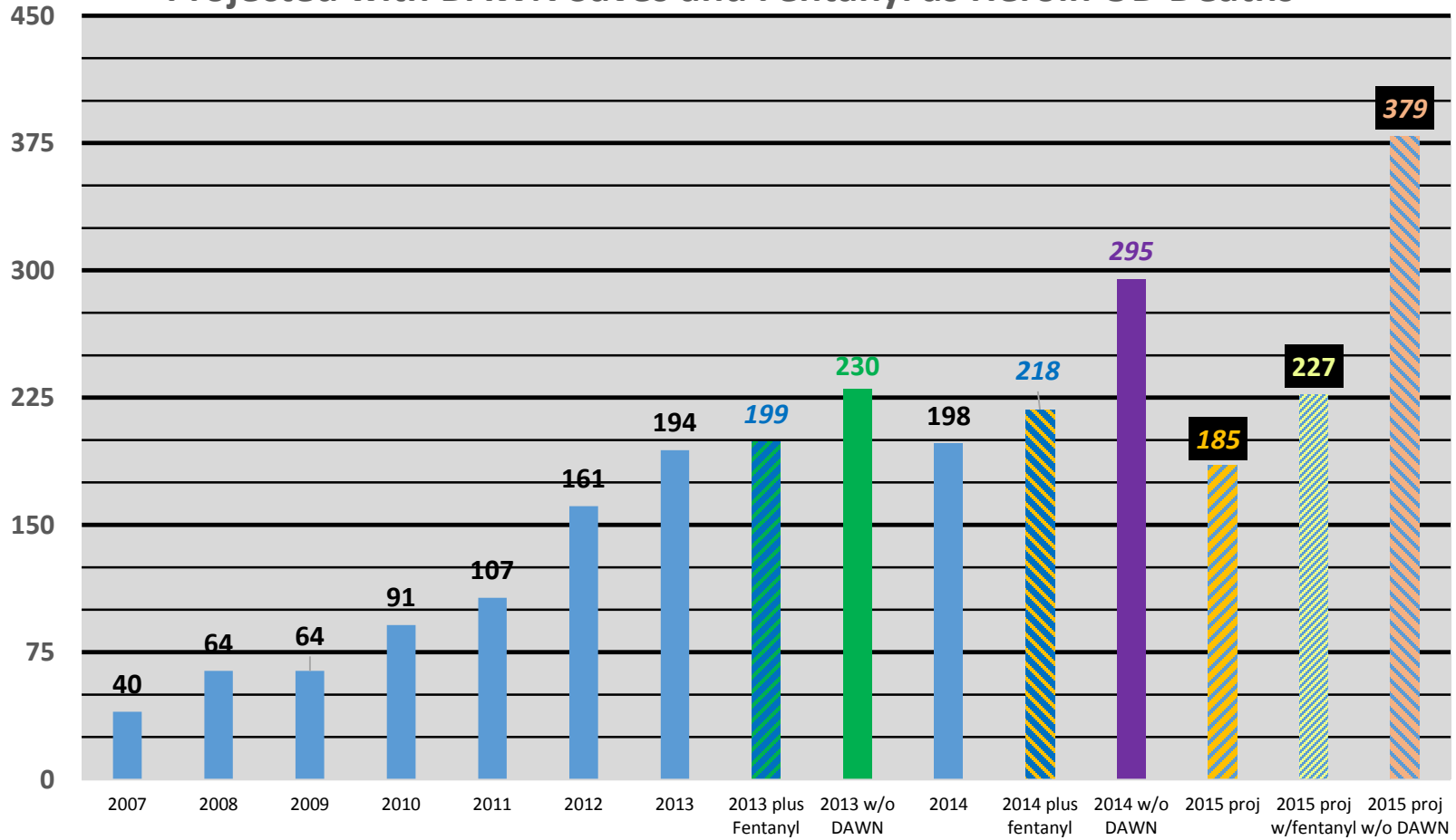
(2015 data estimated based on preliminary tox and not all ruled cases)



Source: Cuyahoga County Medical Examiner's Office
10/23/2015



Cuyahoga County Heroin Related Overdose Deaths 2007-2015 Projected with DAWN Saves and Fentanyl as Heroin OD Deaths



Source: Cuyahoga County Medical Examiner's Office and Project DAWN
9/23/2015

